

# FURNITURE

Catalogue



FIBONACCI

ARCHITECTS & INTERIOR DESIGNERS



## About us

From private residences to luxury hotels and commercial spaces, Fibonacci delivers expert design solutions rooted in modern sophistication. We partner with homeowners and industry leaders to curate personalized interiors that embody elegance and comfort. Discover a design experience where your vision meets our mastery in contemporary aesthetics.



01 Custom Furniture

02 Living Living

03 Chairs

04 Decorative Units

05 Bedroom





# Why Custom Furniture Matters

Every space is unique, and furniture should be designed to complement its dimensions, purpose, and character. Custom furniture transforms interiors by making the most of available space while reflecting the client's individual lifestyle and aesthetic preferences. Unlike mass-produced alternatives, bespoke furniture ensures that every element is thoughtfully designed to suit the environment perfectly.

## Key Benefits:

- Optimized use of space
- Tailored to functional needs
- Personalized aesthetics
- Seamless integration with interiors



“Exceptional spaces demand bespoke furniture. We refine every detail to mirror your unique aesthetic.”



### Key Advantages of Custom-fit Design

- Every piece is made to exact dimensions for a perfect fit.
- Material & Finish Flexibility
- Choose from a wide range of finishes, textures, and colors.
- Attention to Detail
- Every joint, edge, and finish is executed with precision.
- Long-Term Value
- Quality craftsmanship ensures durability and timeless appeal.

## Why Custom Furniture Matters



**Custom-made furniture offers the flexibility to create pieces that align perfectly with the client's vision, while also improving functionality and durability. From dimensions and finishes to materials and detailing, every aspect can be customized to ensure the final product enhances both usability and design harmony.**

# From Design Vision to Factory Precision



## Our Production Strengths:

- In-house custom manufacturing
- Precision craftsmanship
- Quality-controlled production
- Wide selection of custom finishes and colors
- Reliable execution from concept to completion



# Your Vision, Our Craftsmanship



We believe furniture should express individuality while serving practical needs.

By combining client preferences with expert craftsmanship, we create bespoke furniture solutions that enhance the character of every interior. Whether it is cabinetry, wardrobes, vanities, or feature pieces, each product is designed and manufactured to bring the client's vision to life.





# LIVING ROOM

An exquisite fusion of architectural precision and bespoke comfort, the Aris Linear Sofa is a statement piece designed for the modern connoisseur. This sofa redefines luxury through its unique "bolster-stack" silhouette and meticulous attention to mixed-media detailing.

## Key Features

- **Tailored Textiles:** Wrapped in a premium, fine-ribbed corduroy upholstery, the Aris offers a tactile experience that is both visually rhythmic and incredibly soft to the touch.
- **Contrasting Accents:** The soft cream fabric is elegantly framed by integrated leather-clad bracing. These deep espresso leather panels add structural definition and a sophisticated, masculine edge.
- **Refined Hardware:** The piece is elevated on slim, tapered metal legs finished in satin champagne gold, providing a floating effect that maintains an airy feel in any living space.
- **Modular Aesthetic:** Featuring distinctive cylindrical armrests and matching bolstered cushions, the design emphasizes clean, horizontal lines that elongate the room.

# LIVING ROOM COLLECTION

Custom furniture transforms a living room into a highly functional, cohesive space by solving the specific spatial and aesthetic puzzles that mass-produced pieces often ignore. Because every inch is tailored to your room's exact dimensions, you can maximize storage or seating in awkward corners while selecting high-quality materials and finishes that align perfectly with your personal style. This approach not only ensures a unique, "one-of-one" look but also provides long-term value through superior craftsmanship, resulting in a home environment that feels intentionally designed rather than just assembled.





Defined by its sculptural silhouette and rhythmic vertical channeling, the Serene Sofa is a masterclass in modern minimalism. This piece seamlessly blends structural boldness with an inviting, plush softness, making it the perfect focal point for a contemporary interior.

#### Key Features

- **Vertical Channel Tufting:** Deep, precision-stitched channels run across the seat and base, creating a sense of visual continuity and architectural depth.
- **Low-Profile Monolith Design:** The "to-the-floor" base and integrated armrests provide a grounded, monolithic look that anchors a room without cluttering the visual plane.
- **Tactile Luxe Upholstery:** Draped in a premium pearl-toned velvet-blend, the fabric offers a subtle sheen and an ultra-soft hand feel that evolves beautifully under different lighting conditions.
- **Ergonomic Comfort:** Beyond its striking looks, the sofa features a high-resilience core designed for long-lasting support, ensuring the piece retains its crisp shape even with daily use.



The Lune Accent Chair is a triumph of organic geometry, designed to bring a sense of fluid movement and modern elegance to any interior. With its continuous wrap-around silhouette and distinctive "cut-out" back, this chair serves as both a functional seat and a standalone piece of modern art.



# CHAIRS



Defined by its dual-volume composition and organic timber exoskeleton, the Chair is a masterclass in the balance between structural honesty and sculptural comfort. This piece seamlessly merges the warmth of handcrafted joinery with a bold, contemporary silhouette, making it an essential statement piece for curated living spaces or executive lounges.

#### Key Features

- **Dual-Texture Materiality:** A sophisticated interplay of finishes defines the piece. The seat is anchored in a smooth, matte Cocoa leather, while the backrest is draped in a high-tactile Oatmeal weave, offering a sensory contrast that is both modern and timeless.
- **Monolithic Base Geometry:** The heavy, low-profile seat cushion provides a sense of architectural permanence. Designed with high-density architectural foam, it maintains its crisp, rectilinear edges while offering deep, responsive support.
- **360-Degree Design Language:** With its exposed interlocking joinery and sculptural rear profile, the Meridian is designed to be viewed from every angle, serving as a functional art piece in open-plan environments.



The Lounge Chair is a masterclass in curated texture, blending a soft, organic silhouette with high-contrast materials. Designed to be a compact yet commanding presence, this chair offers a "layered" aesthetic that brings warmth and modern sophistication to any corner of the home.



"The Heritage stool was designed to bridge the gap between formal dining and casual living. By taking the iconic tufted back of a library chair and pairing it with a clean, tapered wooden base, we created a piece that feels established but never dated. It's about bringing that 'private club' atmosphere into the heart of the home."



"By separating the seat from the backrest with a rigid steel frame, we created a piece that feels more like an installation than a chair. The choice of sage green and stone gray reflects a modern, biophilic palette that brings a calm, natural vibe to a high-concept design."



"Defined by its fluid, curved geometry and luxurious texture, the Ellipse Lounge Chair is a masterclass in modern, organic design. This piece serves as a sophisticated focal point for high-end interiors, balancing a strong, grounded form with an inviting, immersive softness."

Defined by its rhythmic verticality and integrated ambient lighting, this custom-designed TV unit is a sophisticated exercise in Contemporary Linearism. It moves beyond traditional cabinetry to act as a fully integrated architectural feature wall, balancing functional storage with an open, gallery-style display.

1. Structural Composition & Geometric Logic  
The unit is organized into a clear tripartite hierarchy:

- The Fluted Plinth (Base): A low-profile, "to-the-floor" credenza serves as the foundation. It features high-precision vertical channel tufting or fluting across the drawer fronts, providing a textured, rhythmic base that conceals media components while adding tactile depth.
- The Integrated Niche: The television is recessed into a central aperture, flush-mounted against a textured back panel (micro-cement or matte lacquer finish), ensuring the tech feels like an intentional part of the architecture rather than an afterthought.



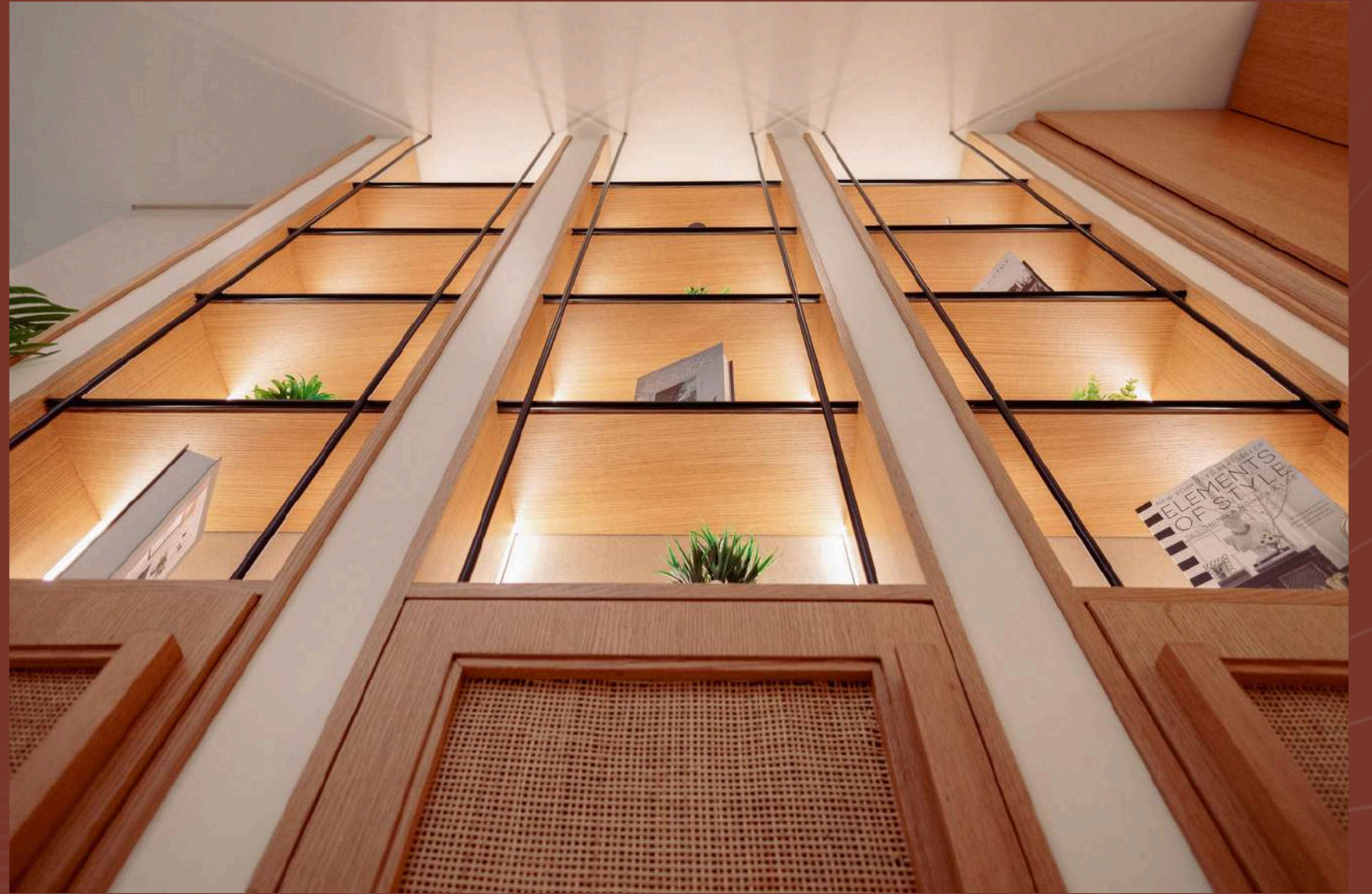
# DECORATIVE UNITS



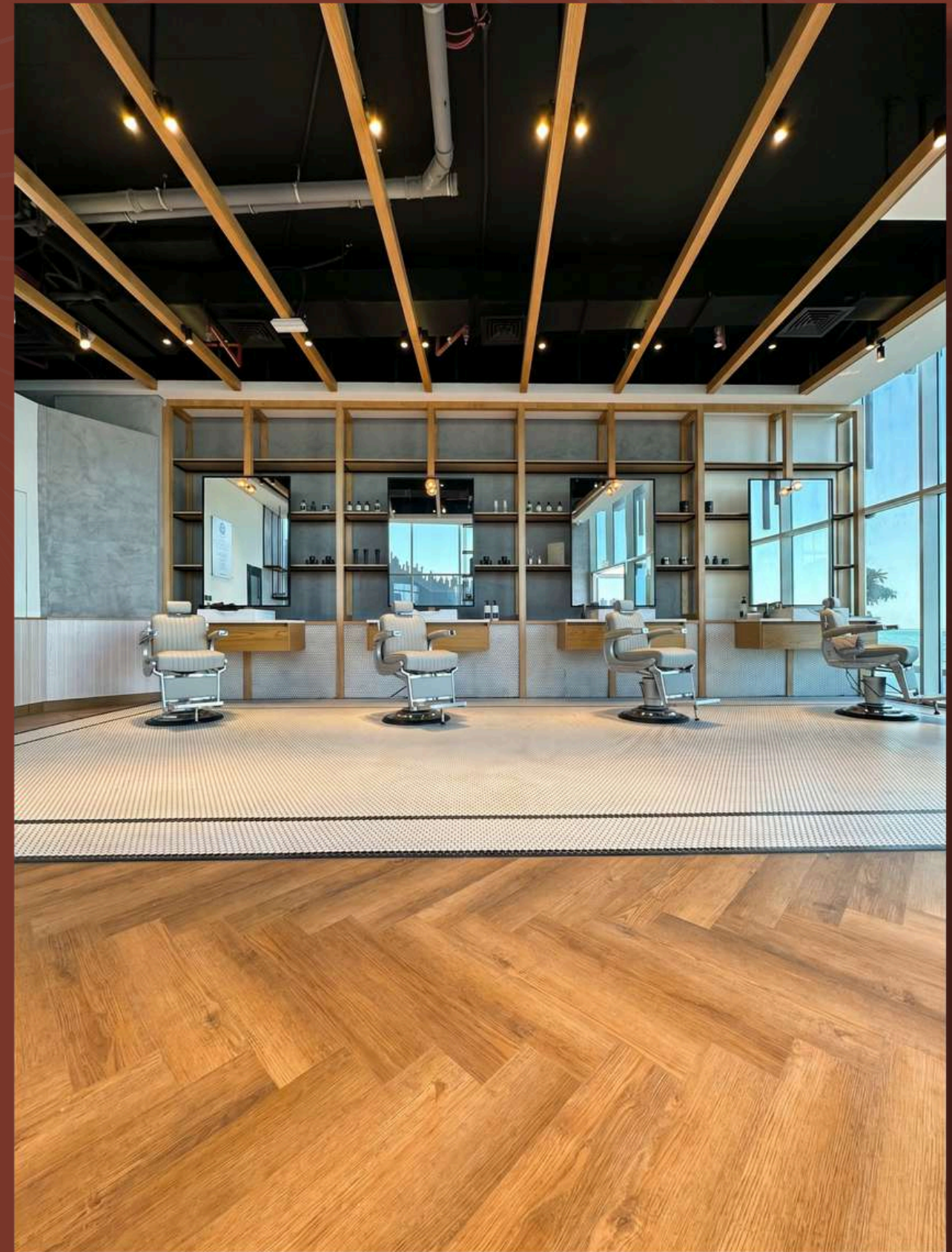


Interplay of warm timber and champagne-toned paneling, this custom media unit is a masterclass in Modern Axial Symmetry. It transforms a standard entertainment wall into a structured architectural feature, utilizing vertical and horizontal datum lines to organize storage, technology, and curated display.

- Primary Finish: Light-toned Oak veneer with a vertical grain direction, emphasizing the room's ceiling height.
- Secondary Surface: Matte lacquer panels in a soft Almond or Sand hue, providing a neutral, non-reflective surface that enhances the clarity of the TV display.
- Refined Accents: Recessed Brushed Champagne Bronze inlays define the transitions between materials, adding a subtle industrial glint and a sense of luxury precision.







# BED ROOM



An exquisite fusion of architectural precision and bespoke comfort, the Aris Linear Sofa is a statement piece designed for the modern connoisseur. This sofa redefines luxury through its unique "bolster-stack" silhouette and meticulous attention to mixed-media detailing.

#### Key Features

- **Tailored Textiles:** Wrapped in a premium, fine-ribbed corduroy upholstery, the Aris offers a tactile experience that is both visually rhythmic and incredibly soft to the touch.
- **Contrasting Accents:** The soft cream fabric is elegantly framed by integrated leather-clad bracing. These deep espresso leather panels add structural definition and a sophisticated, masculine edge.
- **Refined Hardware:** The piece is elevated on slim, tapered metal legs finished in satin champagne gold, providing a floating effect that maintains an airy feel in any living space.
- **Modular Aesthetic:** Featuring distinctive cylindrical armrests and matching bolstered cushions, the design emphasizes clean, horizontal lines that elongate the room.

“This bedroom demonstrates how custom-built furniture transforms the space into a cohesive architectural composition rather than a collection of separate pieces: the full-height wardrobe, shelving, and recessed bench are seamlessly integrated into a single wall system, maximizing storage while keeping the room visually clean and uncluttered; the built-in bench creates a functional niche without occupying extra floor area, while the flush cabinetry eliminates gaps and enhances spatial continuity; on the opposite side, the extended upholstered headboard with integrated lighting turns the bed into a feature wall, reducing the need for additional décor; together, these tailored elements optimize every inch, improve functionality, and create a calm, well-balanced environment that feels both spacious and intentionally designed.”





The headboard is conceived as an integrated architectural feature rather than a standalone element, where a soft upholstered back panel is extended vertically into a full-height wall composition articulated with evenly spaced vertical metal inlays; this creates rhythm, height emphasis, and a sense of luxury while visually anchoring the bed within the space, and by merging with adjacent mirrored panels and wall finishes, it eliminates visual breaks, enhances depth, and reflects light subtly—resulting in a refined, cohesive backdrop that elevates both the scale and sophistication of the room while reducing the need for additional decorative layers.

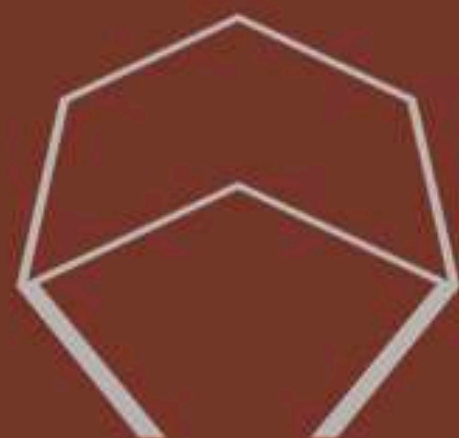


“This desk is designed as a sculptural, custom-built statement piece where form and function are seamlessly integrated; the solid wood construction with its rounded edge profile and cylindrical support base gives it a monolithic, architectural presence, while the fluted front panel adds texture and visual depth, softening the mass and introducing a refined rhythm; the extended, asymmetrical layout enhances usability by providing generous workspace and clear zoning, and because it is fully custom, proportions, storage integration, and material continuity are precisely controlled—resulting in a clean, clutter-free executive setup that feels both luxurious and purposefully composed within the space.”



“Custom furniture serves as the connective tissue of a well-designed interior, allowing for a level of material and formal synergy that ready-made pieces simply cannot achieve. In this concept, the walnut wood finishes, curved geometries, and integrated lighting move seamlessly from the reception desk to the seating arrangements, creating a singular, cohesive narrative where the furniture feels like a structural extension of the architecture itself. By tailoring the scale and contour of each piece—such as the curved sectional or the plinth-based sofas—you optimize the room's flow and functionality, ensuring that every element is perfectly proportioned to the space it inhabits.”





# FIBONACCI

FORM | SPACE | ORDER

CHURCHILL EXECUTIVE TOWER, BUSINESS BAY, DUBAI

+971 4 558 8430 | +971 55 8545 0286

[info@fibonaccidxb.com](mailto:info@fibonaccidxb.com) | [www.fibonaccidxb.com](http://www.fibonaccidxb.com)